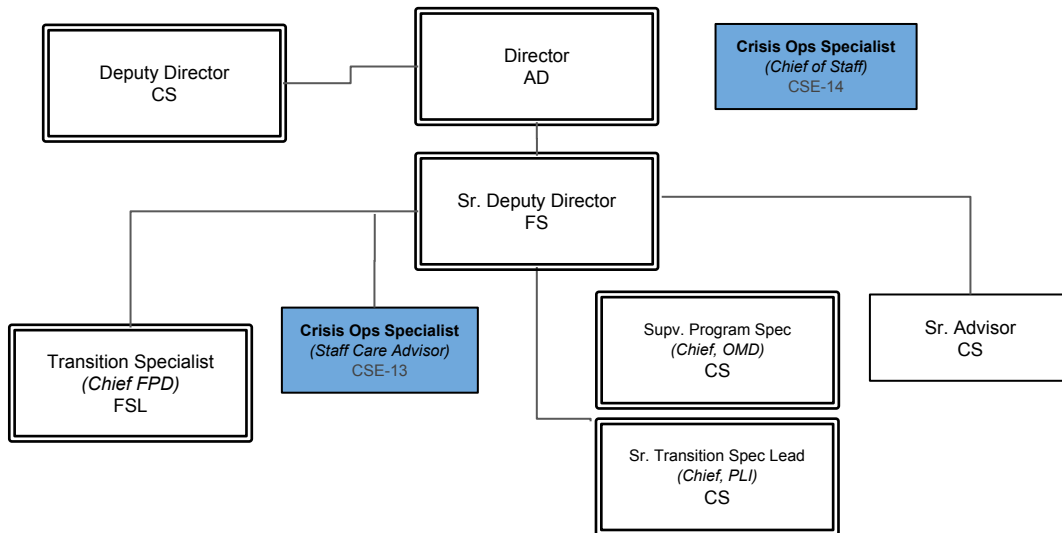
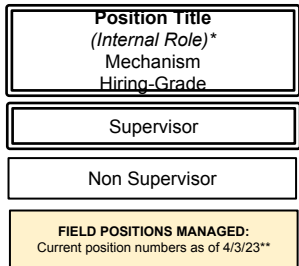




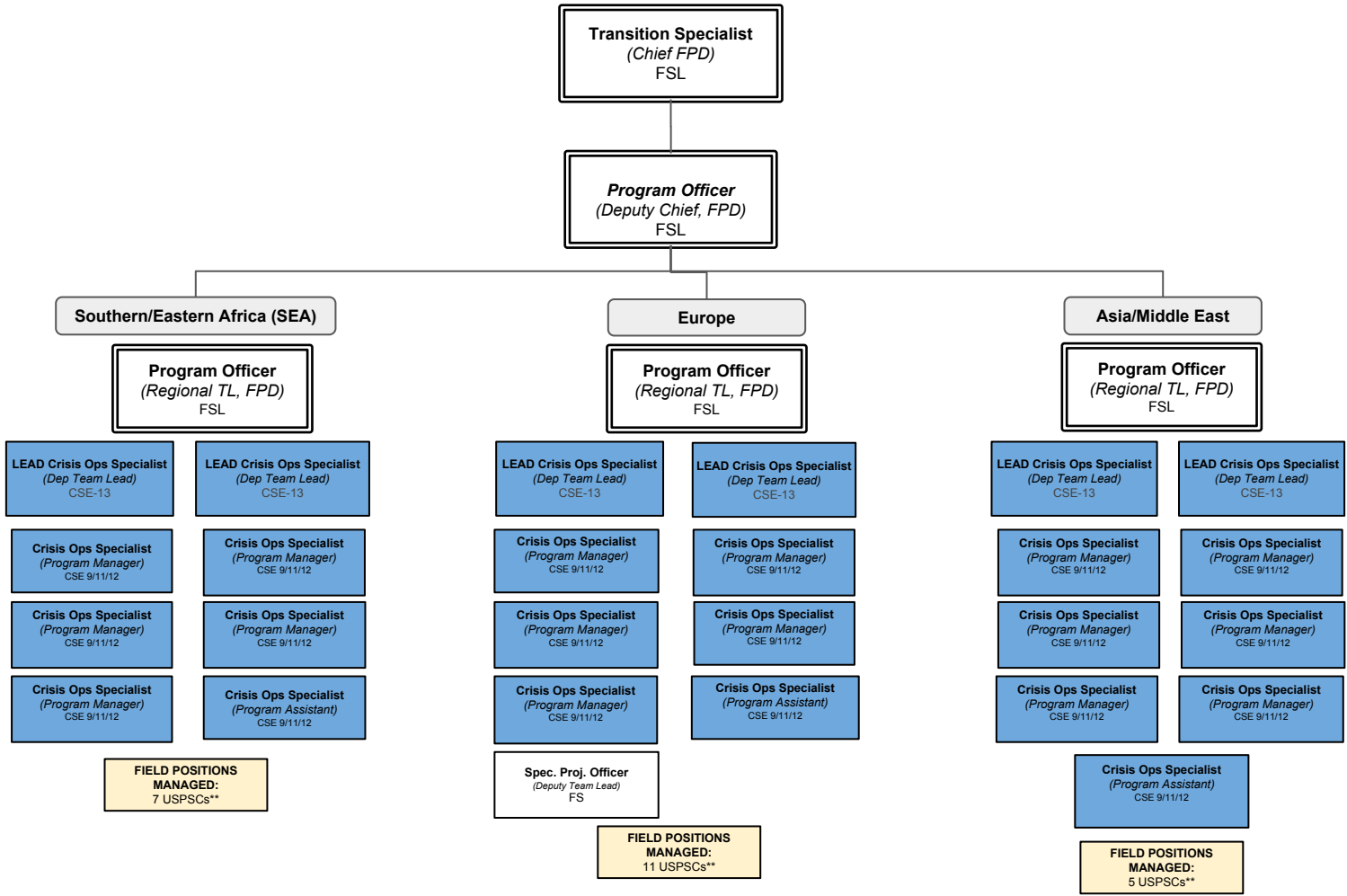
# CPS/OTI Organizational Chart Reflecting CSEs & Reporting Chains April 14, 2023

## LEGEND



\*Internal roles and/or teams may change based on the contingency nature of the work.

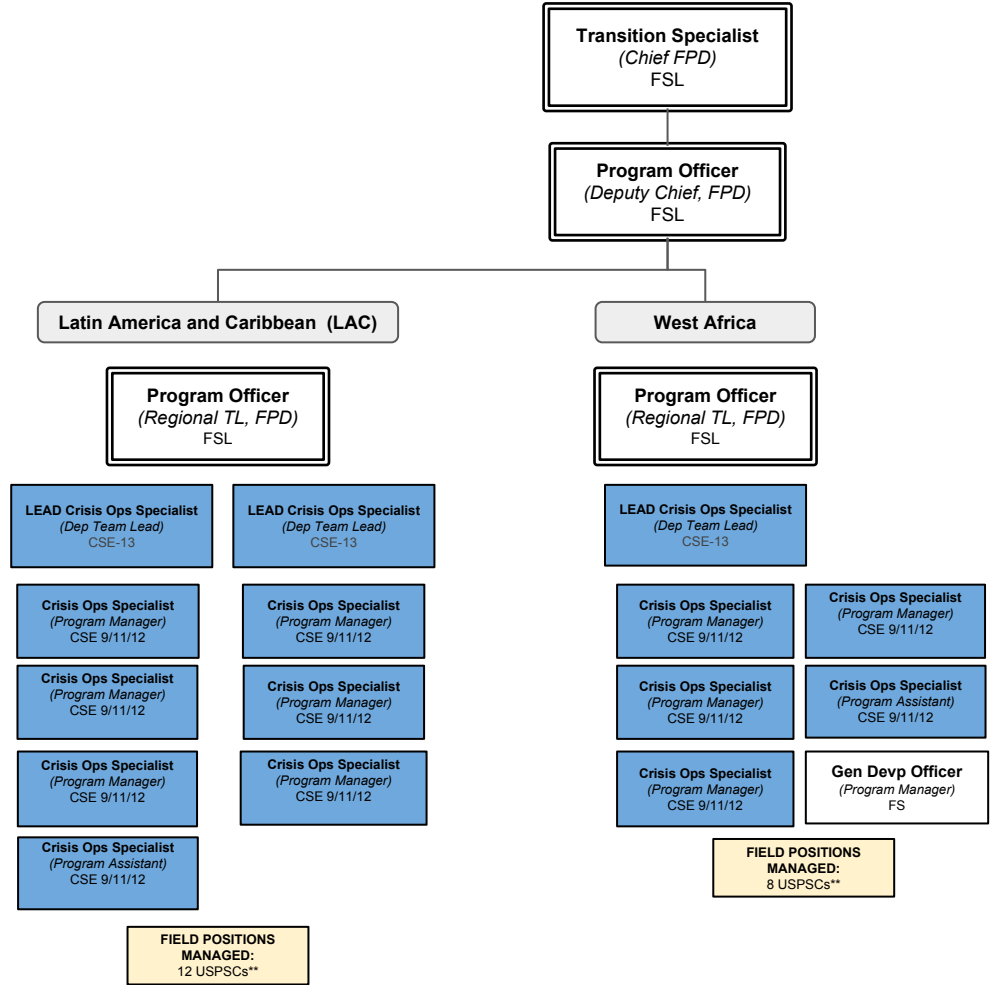
\*\*Field Positions numbers change frequently based on the number and type of country programs supported. Numbers do not include other hiring types (ISCs, FSN, etc)



\*Internal roles and/or teams may change based on the contingency nature of the work.

\*\*Field Positions numbers change frequently based on the number and type of country programs supported. Numbers do not include other hiring types (ISCs, FSN, etc)

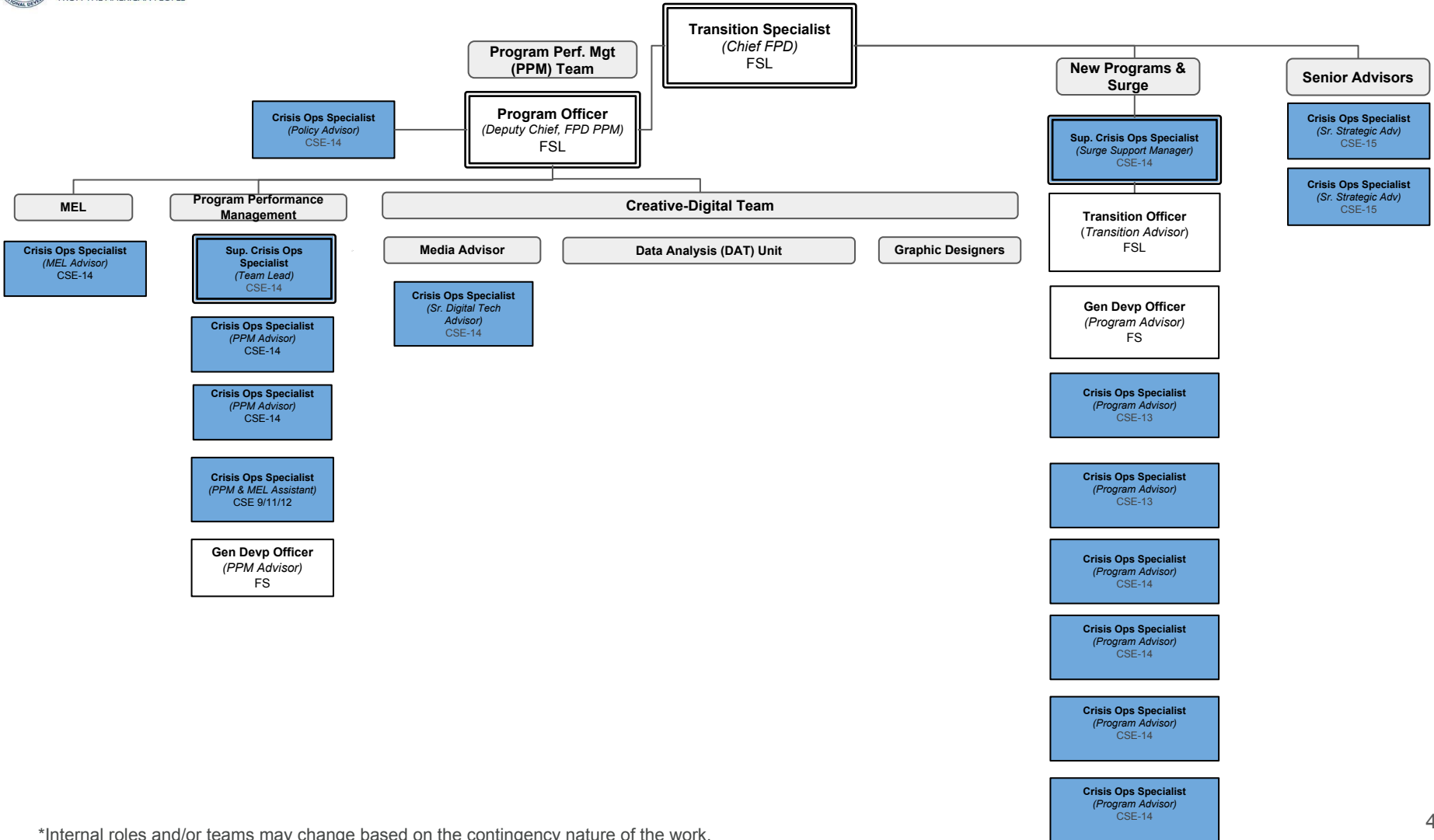
**CPS/OTI Field Programs Division (FPD) Washington Staff (b)**



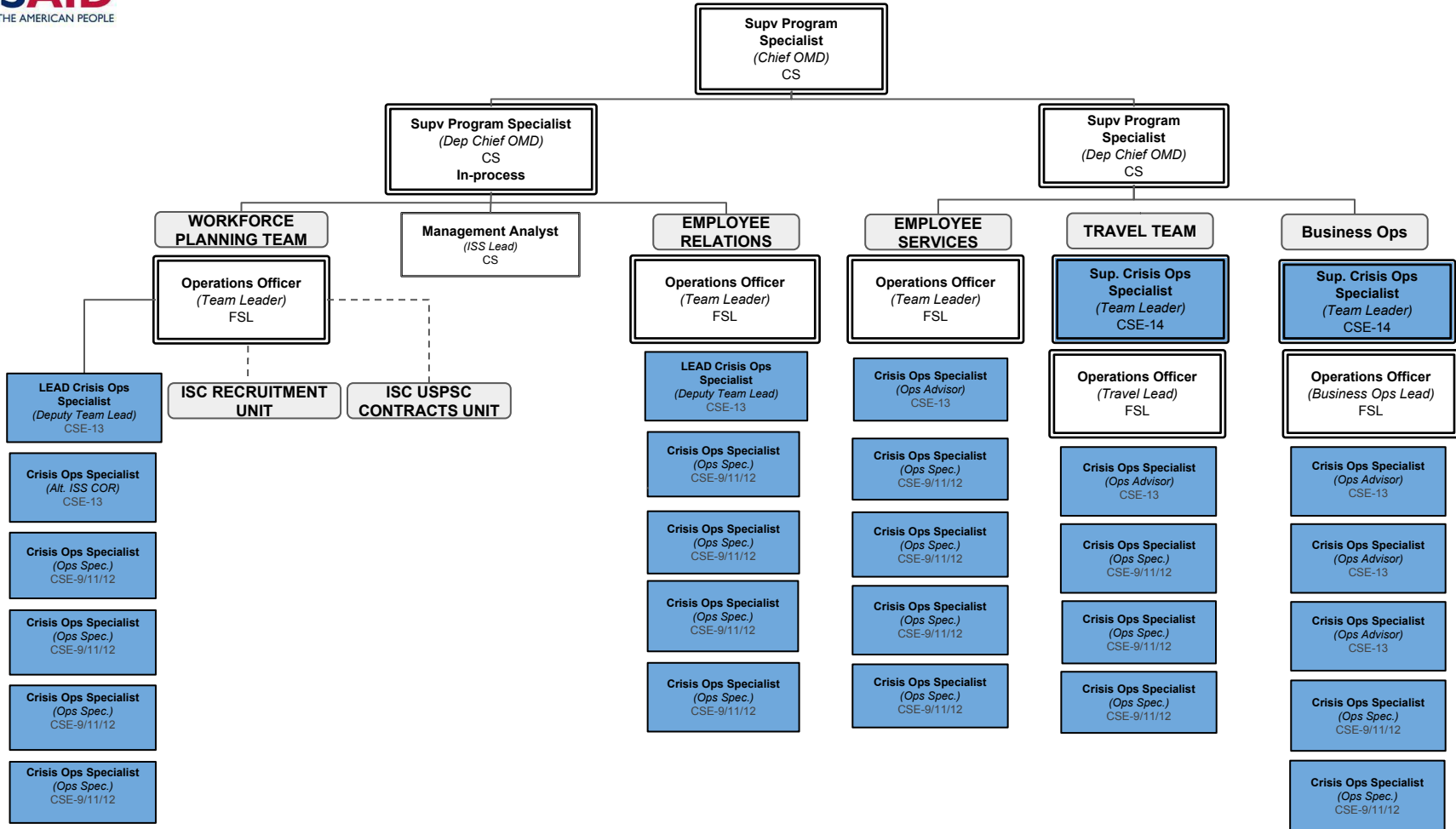
\*Internal roles and/or teams may change based on the contingency nature of the work.

\*\*Field Positions numbers change frequently based on the number and type of country programs supported. Numbers do not include other hiring types (ISCs, FSN, etc)

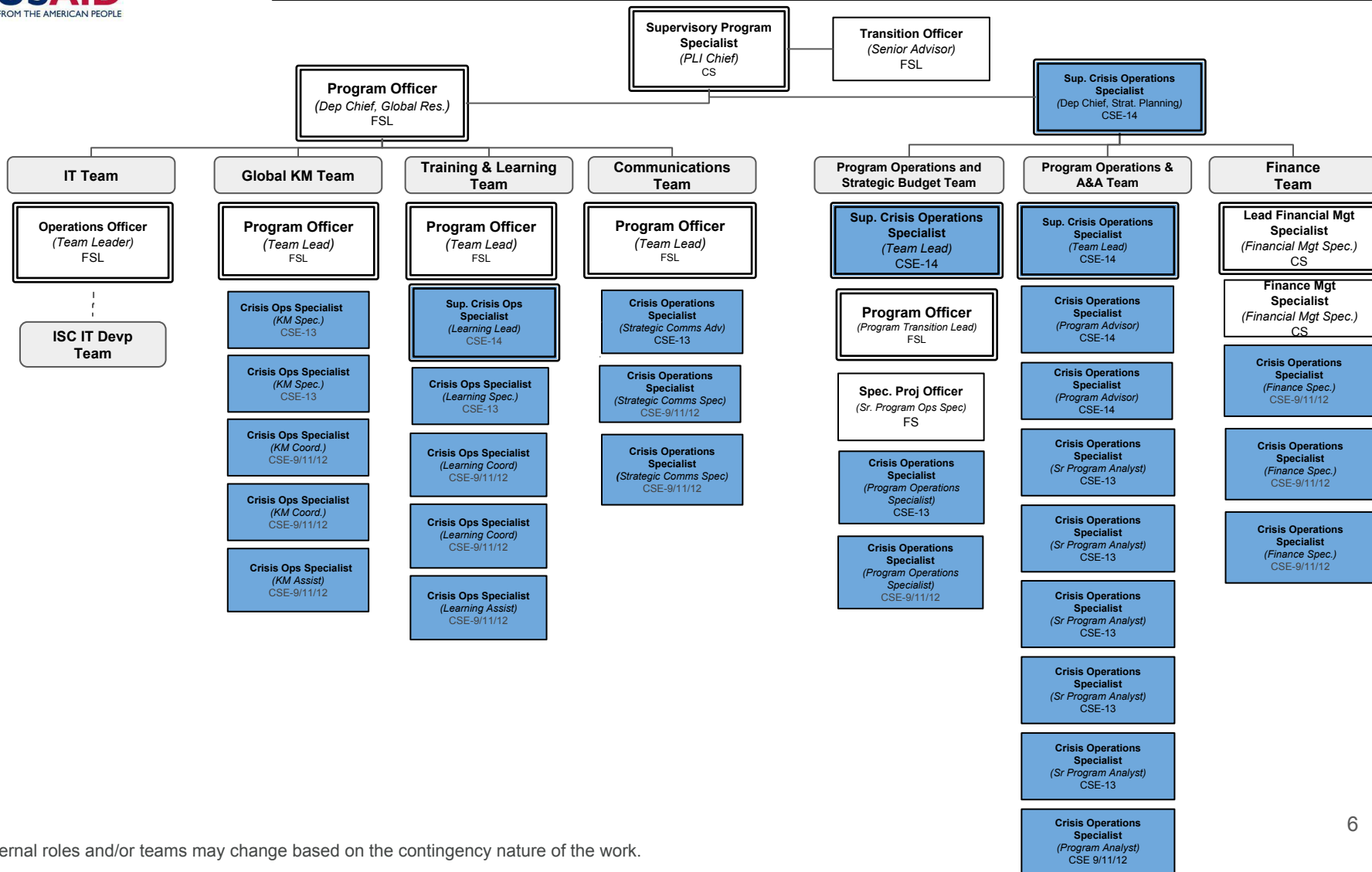
# CPS/OTI Field Programs Division (FPD) Washington Staff (c)



\*Internal roles and/or teams may change based on the contingency nature of the work.



\*Internal roles and/or teams may change based on the contingency nature of the work.



\*Internal roles and/or teams may change based on the contingency nature of the work.

**SEC**

**Crisis Ops Specialist**  
*(SEC Spec)*  
CSE-13

**HCTM**

**Crisis Ops Specialist**  
*TBD*  
CSE-13

**Crisis Ops Specialist**  
*TBD*  
CSE-13